

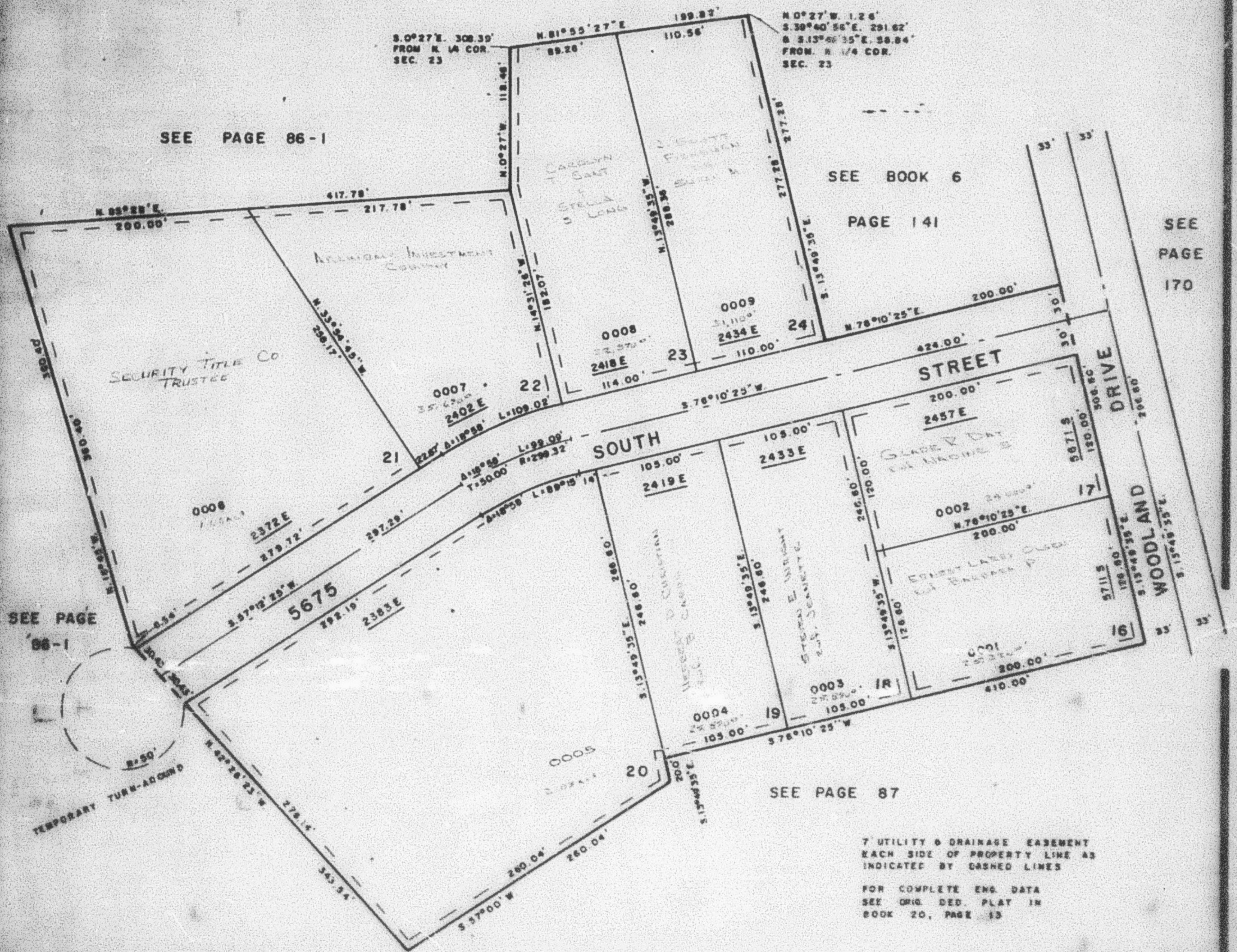
PART OF N 1/2 SEC. 23, T. 5 N., R. 1 W., S. L. B. & M.
WOODLAND HILLS SUBDIVISION NO. 2
 AMENDED PLAT
 LOTS 16-24
 IN WEBER COUNTY
 SCALE 1"=60'

193

TAXING UNIT 54,

PREFIX 07-193

EXCEPT WHERE OTHERWISE SHOWN
 ALL LOTS OWNED BY
 GEORGE R. WRIGHT



SEE PAGE 86-1

SEE BOOK 6
 PAGE 141

SEE
 PAGE
 170

SEE PAGE
 86-1

SEE PAGE 87

7' UTILITY & DRAINAGE EASEMENT
 EACH SIDE OF PROPERTY LINE AS
 INDICATED BY DASHED LINES

FOR COMPLETE ENG. DATA
 SEE ORIG. DED. PLAT IN
 BOOK 20, PAGE 13